



MP5161
Power Chisel
(Type 1)



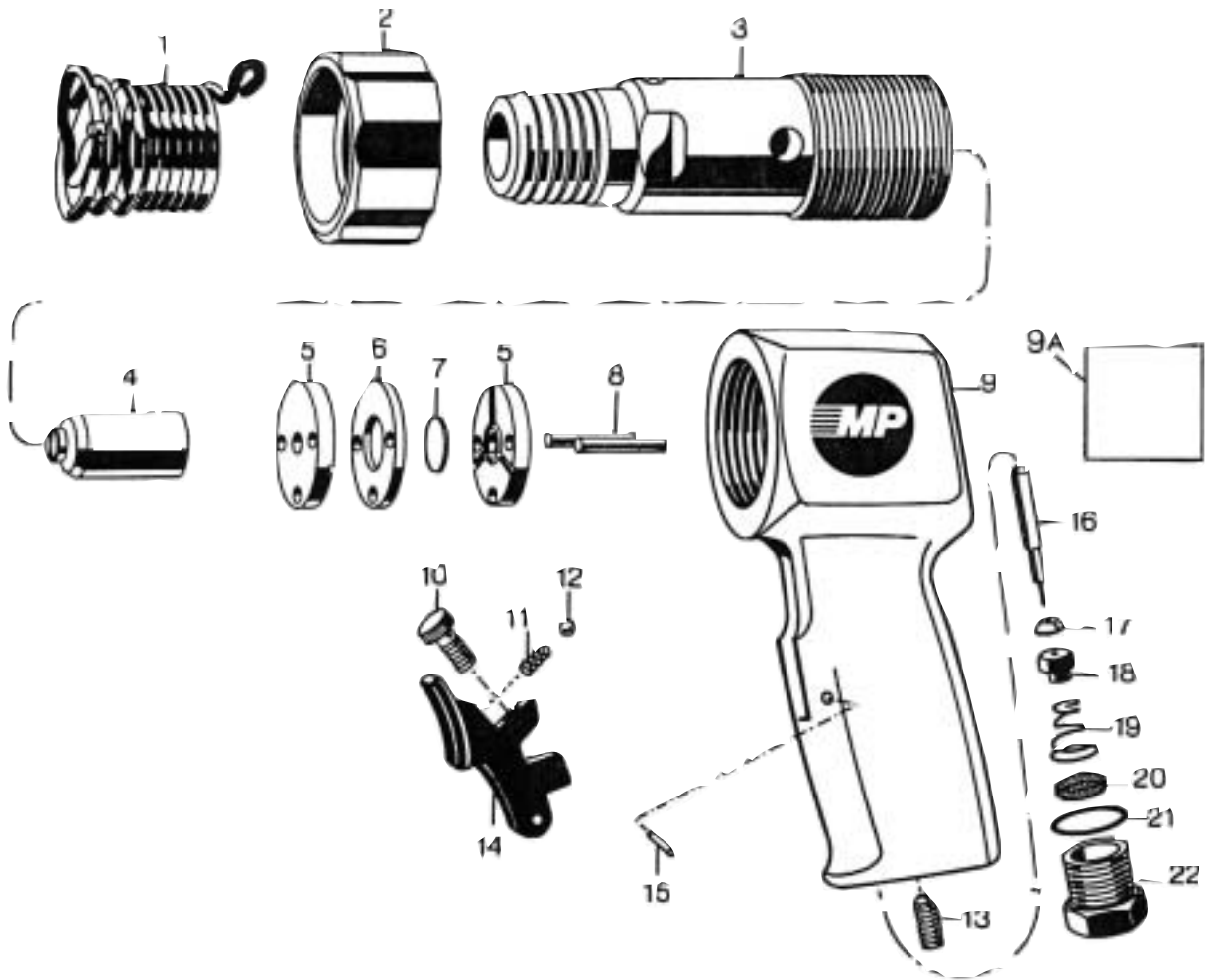
Model Number	Blows Per Minute	Length	
		in.	mm
MP5161	4,000	7.0	178

For additional product information visit our website at <http://www.coopertools.com>

MASTER POWER MP5161 Power Chisel

"A"

(●) Indicates recommended spare part. Order one (1) or one set for every 5 tools or two sets for 6-10 tools. Small, easily lost or low cost parts should also be ordered on the basis of 3-4 per 10 tools.



Important! To assure product SAFETY AND RELIABILITY, repairs, maintenance and adjustment should be performed by CooperTools Sales & Service Centers or other qualified service organizations, always using MASTER POWER® replacement parts.

WHEN ORDERING REPLACEMENT PARTS YOU MUST GIVE UNIT, TYPE AND CATALOG NUMBER AS SHOWN ON NAME-PLATE, PLUS PART NUMBER AND NAME OF PART NEEDED.

(#) Quantity • Stückzahl • Quantité • Cantidad • Quantità
(●) Recommended Spare Parts (§) Included in tune-up kit

MASTER POWER
MP5161 Power Chisel

PL16-5161
February 25, 2002

Index	Part Num.	(GB) Description	(D) Benennung	(F) Designation	(E) Descripción	# ●
1	58616	Quick-Change Spring (Acc.)				1
2	700592	Nut (Locks barrel to housing)	Mutter	Ecrou	Tuerca	1
3	702596-01	Barrel				1
4	702596-00	Piston	Kolben	Piston	Embolo	1
5	91058-01	Valve Block				2
6	700596-00	Spacer	Distanzstück	Entretoise	Espaciador	1
7	700594-00	Valve	Ventil	Soupape	Válvula	1
8	701070-00	Pin	Stift	Goujon	Pasador	2
9	73171-00	Housing (Incl. 9A)	Gehäuse	Cage	Caja	1
9A	701832-03	Nameplate	Namensschild	Plaque	Placa de identificación	2
10	85180-00	Screw(Trigger Regulating)				1
11	71334-00	Spring	Druckfeder	Ressort	Resorte	1
12	457-00	Ball (3/16)	Kugel (3/16)	Bille (3/16)	Balín	1
13	80154-00	Set Screw (1/4-20 x 5/8)	Stellschraube (1/4-20 x 5/8)	Vis de pression (1/4-20 x 5/8)	Tornillo fijador (1/4-20 x 5/8)	1
14	90887-00	Trigger (Incl. 10, 11, 12)	Drücker	Auslöser	Déclencheur	1
15	99229-05	Pin	Stift	Goujon	Pasador	1
16	73174-00	Valve Stem	Ventilstößel Ventilschaft	Tige de soupape	Vástago de válvula	1
17	71283-00	Cap	Kappe	Chapeau	Tapa	1
18	71284-00	Valve	Ventil	Soupape	Válvula	1
19	71285-00	Spring	Druckfeder	Ressort	Resorte	1
20	54436-00	Screen	Bildschirm	Ecran	Criba	1
21	700245-00	"O" Ring	O-Ring	Anneau "O"	Anillo "O"	1
22	71287-00	Inlet Bushing (3/4-20)				1

SAFETY FIRST!

ALWAYS COMPLY WITH:

1. General Industry Safety & Health Regulations, Part 1910, OSHA 2206, available from: Sup't of Documents; Government Printing Office; Washington DC 20402
2. Safety Code for Portable Air Tools, ANSI B186.1 available from: American National Standards Institute, Inc.; 1430 Broadway; New York, NY 10018
3. State and Local regulations.

Portions of the above codes and regulations are listed below for quick reference.

THESE EXCERPTS ARE NOT INTENDED TO BE ALL INCLUSIVE – STUDY AND COMPLY WITH ALL REGULATIONS!



FAILURE TO COMPLY WITH ALL SAFETY REGULATIONS MAY RESULT IN SERIOUS INJURY.

1. TOOL INTENT – Tools shall be used only for purposes intended in their design (refer to product catalog).
2. AIR SUPPLY – Test and operate tools at 90 PSIG maximum unless tool is marked otherwise. Use recommended airline filters–regulators–lubricators.
3. UNUSUAL SOUND or VIBRATION – If tool vibrates or produces an unusual sound, repair immediately for correction.
4. OPERATOR PROTECTIVE EQUIPMENT – Wear goggles or face shield at all times tool is in operation. Other protective clothing shall be worn, if necessary. SEE REGULATIONS.
5. SAFETY MAINTENANCE PROGRAM – Employ a safety program to provide inspection and maintenance of all phases of tool operation and air supply equipment in accordance with "Safety Code for Portable Air Tools."

Safe Work Practices Symbol



The signal word "Warning" identifies all notes on safe work practices in this operating instruction, alerting to hazards for life and health of people. Observe these notes and proceed with special care in the cases described. Pass all safety instructions on to other operators. In addition to the safety instructions in this operating instruction, the general local safety and accident prevention rules must be observed.

Important Notes



The signal word "Caution" identifies all portions of this operation instruction meriting special attention to ensure that guidelines, rules, hints and the correct work procedures are observed; and, to prevent damage to and destruction of the machine and/or parts.

(*) Indicates recommended spare part (or set) for every five (5) tools. Small, low cost or easily lost parts should be stocked as 3-4 per 10 tools.



Disconnect the air supply hose before servicing the tool.

OPERATION

Models covered by this parts list...

The MP5161 model is a Pistol Grip, Reversible, 3/8" Impact Wrench. The operator actuates and releases the trigger, which starts and stops the air motor.

For best performance, a maximum working air pressure of 90 pounds per square inch, *measured at the tool while running*, is recommended.

LUBRICATION

Lubricate the motor with an air line lubricator, using a high grade SAE #5 light spindle oil. Adjust the lubricator to dispense one drop per cycle or three drops per minute. Use CooperTools' "MasterGuard" oil, available in four-ounce containers (#60538) or a one quart container (#60539).

The impact mechanism should be greased every 90 days under normal use or every 150 hours of operation, whichever comes first using a thin coating of Lubriplate #504395 Grease.



Do not use substitutes for recommended lubricants. This could result in damage to the tool.

SERVICE INSTRUCTIONS

The parts of this tool are small and require careful handling. DO NOT squeeze tool or parts in a vise except as specified. Bearings are the shielded type. Care must be taken in their assembly and disassembly. Push only on the inner race of the bearings except where specified. NOTE: Bearings are lubricated by the bearing manufacturer for the life of the bearings. Do not clean with a solvent.