

Features

Cat Valve Bar Manifold

Aro's Cat Valve Bar is the fast, preassembled path to compact valve manifold installation. Factory built and tested, the Cat Valve Bar arrives ready to "plumb, plug'n play".

- Factory assembled complete, saves time and money.
- 1" porting centers allows for Alpha raceway boxes. See Page 26.
- Valve overrides are standard.
- Coils are UL and CSA listed (Files: UL #MH13513; CSA #LR51090).
- Suitable for air or inert gas.

1/4" High Flow Cat Valves

High-flow Cats have the performance perks that made the CAT valve famous, plus increased flow capacity that enhances your actuator application options.

- Increased flow.
- Slightly enlarged base and 30 mm coil allows high-flow 1/4" porting without compromising compact size.
- One of the highest air flows available in a direct-acting, compact Valve.
- Powerful enough to drive cylinders, pumps, other components.
- Includes all of the Cat series features/benefits: quick-change coils, rotatable coils, compact size and good shift response.
- Using the 119698-X tie-rod kit, up to seven high-flow Cat valves can be stacked together. See page 41.

Cat
Series Valves



Six-Station Bar Manifold Cat Series Valves.
Maximum ten (10) stations available.



High-Flow Cat Valve has all the perks of other CAT valves, with flow of .2 Cv (6.9 SCFM)

Performance Specifications

Pressure Range:	0 to 150 PSI
Temperature Rating:	0° to 122° F
Operating Medium:	Compressed Air
High-Flow Valves:	CAT66P: Cv = .2 (6.9 SCFM)
	CAT77S: Cv = .2 (6.9 SCFM)
	CAT88P: Cv = .2 (6.9 SCFM)

Ordering



Cat Valve Bar Manifold

C A T X X B - X X X - X

No. of Stations		Coil Options					
		Code	Voltage	Current	Code	Voltage	Current
02	10	000-N	Valve with No Coil		240-A	240 Volt	AC
03	11	005-D	5 Volt	DC	005-L	5 Volt Low Watt	DC
04	12	012-A	12 Volt	AC	012-L	12 Volt Low Watt	DC
05	13	012-D	12 Volt	DC	024-L	24 Volt Low Watt	DC
06	14	024-A	24 Volt	AC			
07	15	024-D	24 Volt	DC			
08	16	120-A	120 Volt	AC			
09		120-D	120 Volt	DC			

See Page 71 for Connectors and other Coil options.

High Flow Cat Valve

Model Number:	Port Size	Valve Function	Body Style
CAT66P-XXX-X*	1/4"	Normally Closed	Ported
CAT77S-XXX-X*	1/4"	Normally Closed	Stacking
CAT88P-XXX-X*	1/4"	Normally Open	Ported

* Coil Voltage

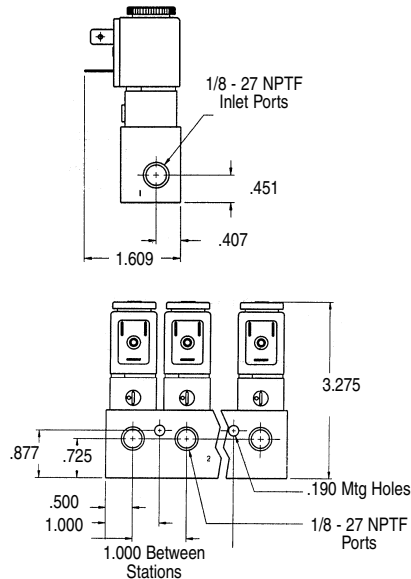
012-D	12 Volt
120-A	120 Volt
024-D	24 Volt
000-N	No Coil

Connector

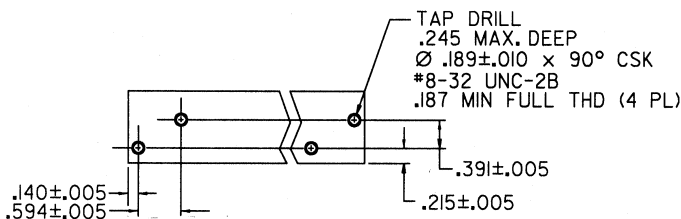
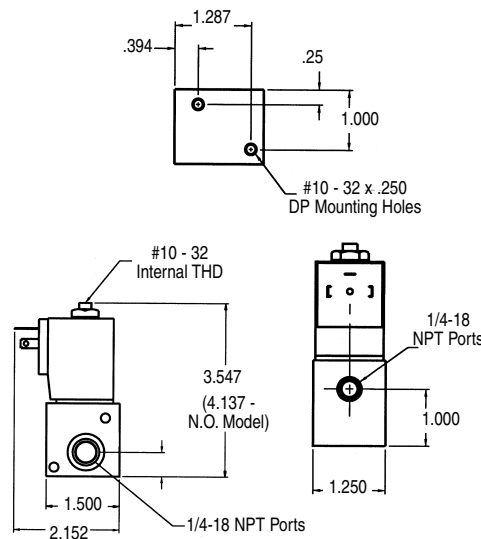
CDW-30	30-mm connector with wire.
CSN-30	30-mm connector, strain relief.
CHW-30	30-mm connector, molded cable.
119690-XX	See Page 71 for Coil information.

Dimensional Data

Cat Valve Bar Manifold



High Flow Cat Valve



Accessories

High-Flow Tie-Rod Kits

Stacking Tie-Rod Kits

- 119698-2 (2 Stations)
- 119698-3 (3 Stations)
- 119698-4 (4 Stations)
- 119698-5 (5 Stations)
- 119698-6 (6 Stations)
- 119698-7 (7 Stations)