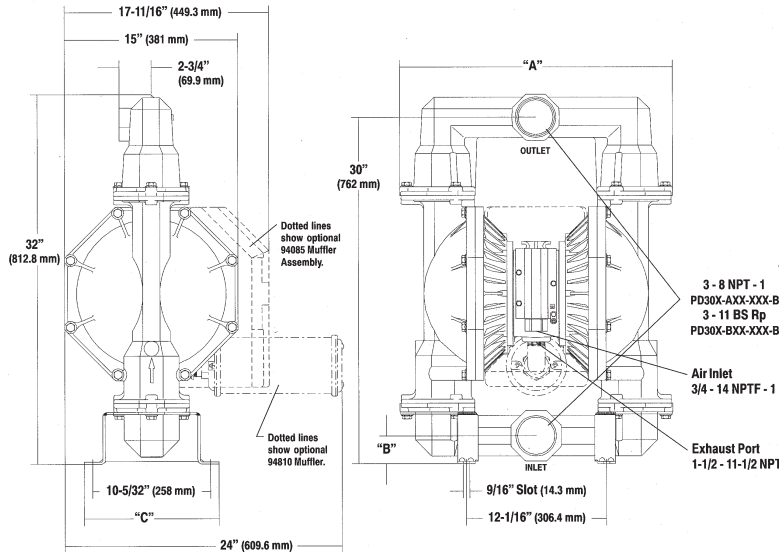


# Performance Specifications

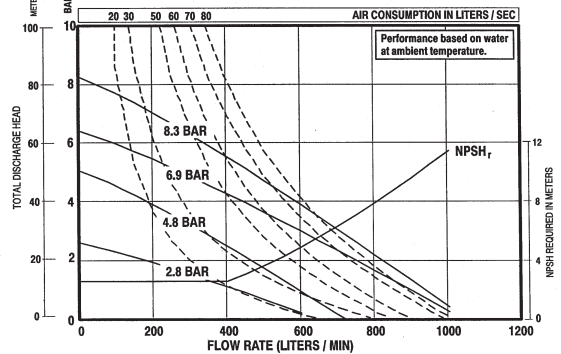
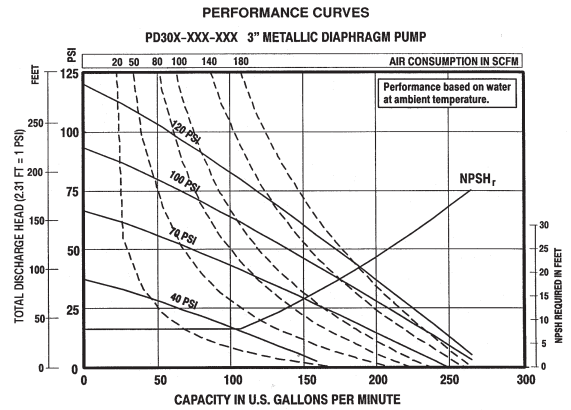
<b>RATIO:</b>	1:1
<b>MAX. G.P.M. (LPM):</b>	275 (1,041)
<b>DISPLACEMENT GALLONS (Liters) PER CYCLE:</b>	2.8 (10.6)
<b>AIR INLET:</b>	3/4" NPTF (f)
<b>AIR EXHAUST:</b>	1-1/2" NPTF (f)
<b>FLUID INLET:</b>	3" NPT (f) or BSP (f)
<b>FLUID OUTLET:</b>	3" NPT (f) or BSP (f)
<b>MAX. OP. PRESSURE PSI (bar):</b>	120 (8.3)
<b>PASS SOLIDS MAX. DIA. IN. (mm):</b>	3/8 (9.5)
<b>WEIGHT LBS. (Kgs.):</b>	113 (51.3) Aluminum, 197 (89.4) Cast Iron 203 (92.1) Hastelloy, 203 (92.1) Stainless Steel (Note: add 40 lbs. (18 kg) for Stainless Air Motor)
<b>MAX. DRY SUCTION LIFT:</b>	19 ft. (Rubber fitted)

# Dimensional Data

Air Motor Muffler **Now** Included!



Screened Inlet Kits Available. See Page 34.



# Accessories

**Recommended Filter-Regulator**  
(See Page 38)

**Filter:** F25451-110  
**Regulator:** 27354-600



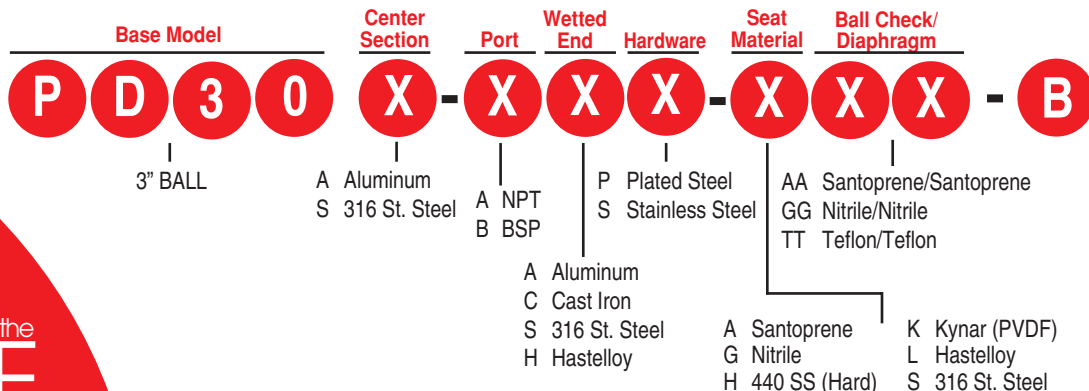
For complete airline connection kit, see page 34, item "B".  
Pulsation Dampener, see page 26.

For Diaphragm Pump Accessories see pages 34-36.

For recommended key models, refer to the ARO diaphragm pump price book (Form 2240-2). If the specific model you seek is not in the price book, consult the factory for further selection assistance.

# Ordering

**Best Selling Models** | PD30A-AAP-GGG-B, PD30A-ASS-AAA-B, PD30A-AAP-KTT-B, PD30A-ASP-KTT-B, PD30A-ACS-AAA-B, PD30S-ASS-STT-B



Uninstallable, ice-free, high-flow delivery

