



# ***Abrasive Finishing Tools***

Dynastraight® .....	29	Mini-Dynisher .....	37
Lightweight Dynastraight® .....	34	Dynisher .....	38
Dynastraight® Flapper .....	35	Electric Dynisher .....	39
Lightweight Dynastraight® Plus .....	35	Dyninger .....	40
DynaRover .....	36	Lightweight Dyninger .....	41
Rolling Pin Sander .....	37	Industrial DynaZip .....	43



***Continued Leadership In Portable Abrasive Power Tool Technology***

***[www.dynabrade.com](http://www.dynabrade.com)***

# Dynastraight®

## Air-Powered Abrasive Finishing Tool

**ABRASIVE CAPACITY**  
**PNEUMATIC WHEELS, CONDITIONING DISCS, FLAP WHEELS**  
 Up to 8" (203 mm) diameter

**For Graining, Cleaning and Polishing on Stainless Steel, Aluminum, Carbon Steel, Composites**

**Model 13200 950 RPM, .7 hp**

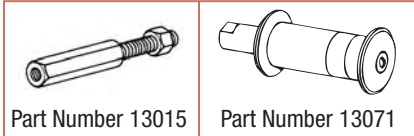
**Model 13500 950 RPM, 1 hp**

- Each model includes 13071 Combo Arbor, for up to 3" wide wheels with 5/8" or 1" diameter center hole.



13200 Dynastraight® runs optional Non-Woven Nylon Wheel (see page 218).

**Arbors**



See page 186 for detailed arbor information.

Model Number	Motor hp (W)	Motor RPM	Sound Level	Maximum Air Flow SCFM (LPM)	Wheel Arbor Diameter	Air Inlet Thread	Tool Thread	Weight Pound (kg)	Length Inch (mm)	Height Inch (mm)
13200	.7 (522)	950	84 dB(A)	34 (957)	5/8" or 1"	1/4" NPT	1/2"-20 Male	4.7 (2.1)	14-7/8 (378)	1-3/4 (44)
13500	1 (744)	950	81 dB(A)	43 (1,218)	5/8" or 1"	3/8" NPT	1/2"-20 Male	5.2 (2.4)	15-3/4 (400)	1-7/8 (48)

**Tune-Up Kit:** .7 hp Model – No. 96260; 1 hp Model – No. 96532 (page 192) • Additional Specifications: Hose I.D. Size 3/8" (10 mm) • Air Pressure 90 PSIG (6.2 Bar)

**Model 13501 1,800 RPM, 1 hp**

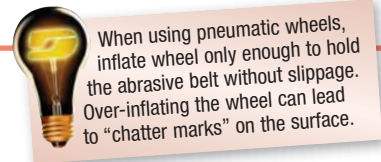
- 13071 Combo Arbor, for up to 3" wide wheels with 5/8" or 1" dia. center hole.
- Any Dynacushion® pneumatic wheel with 5/8" dia. bore (such as 92938) may be mounted.

**Model 13521 1,800 RPM, 1 hp**

- 13015 Threaded Arbor (5/8"-11) ideal for use with optional 94472 Dynacushion® Pneumatic Wheel.



Wheel Sold Separately



**Model 13511 1,800 RPM, 6" Extension, 1 hp**

- 5/8" or 1" diameter combo arbor for up to 3" wide wheels with 5/8" or 1" diameter center hole.
- Any Dynacushion® pneumatic wheel with 5/8" dia. bore (such as 92938) may be mounted.
- Cushioned grip enhances operator comfort.

**Model 13531 1,800 RPM, 6" Extension, 1 hp**

- 5/8"-11 threaded arbor accepts up to 3-1/2" wide pneumatic wheels (not included) with threaded 5/8"-11 center hole. Ideal set-up for optional Dynacushion® pneumatic wheel with 5/8"-11 thread (such as 92805).
- Cushioned grip enhances operator comfort.



Wheel Sold Separately

Model Number	Motor hp (W)	Motor RPM	Sound Level	Maximum Air Flow SCFM (LPM)	Wheel Arbor Diameter	Air Inlet Thread	Tool Thread	Weight Pound (kg)	Length Inch (mm)	Height Inch (mm)
13501	1 (744)	1,800	84 dB(A)	34 (952)	5/8" or 1"	3/8" NPT	1/2"-20 Male	4.2 (1.9)	13-3/8 (339)	1-7/8 (48)
13521	1 (744)	1,800	84 dB(A)	34 (952)	5/8"-11 Male	3/8" NPT	1/2"-20 Male	3.8 (1.7)	14-7/8 (378)	1-7/8 (48)
13511	1 (744)	1,800	82 dB(A)	34 (952)	5/8" or 1"	3/8" NPT	N/A	4.6 (2.1)	17-1/4 (438)	1-7/8 (48)
13531	1 (744)	1,800	82 dB(A)	34 (952)	5/8"-11 Male	3/8" NPT	N/A	4.2 (1.9)	17-1/2 (445)	1-7/8 (48)

**Tune-Up Kit:** No. 96532 (page 192) • Additional Specifications: Hose I.D. Size 3/8" (10 mm) • Air Pressure 90 PSIG (6.2 Bar)





# Dynastraight®

## Air-Powered Abrasive Finishing Tool

ABRASIVE  
CAPACITY
**PNEUMATIC WHEELS,  
CONDITIONING DISCS,  
FLAP WHEELS**  
Up to 8" (203 mm) diameter

**For Graining, Cleaning and Polishing on Stainless Steel, Aluminum, Carbon Steel, Composites**

### Model 13201 3,400 RPM, .7 hp

- 13016 Arbor for up to 2" wide x 1/2" I.D. wheels. Any accessory with 1/2" dia. bore may be mounted.

### Model 13202 3,400 RPM, .7 hp

- 13017 Arbor for up to 2" wide x 5/8" I.D. wheels. Any accessory with 5/8" dia. bore may be mounted.

### Model 13204 3,400 RPM, .7 hp

- 13015 Threaded Arbor (5/8"-11) ideal for use with optional 94472 Dynacushion® Pneumatic Wheel.

### Model 13205 3,400 RPM, .7 hp

- 13071 Combo Arbor for up to 3" wide wheels with 5/8" or 1" dia. center hole. Any Dynacushion® pneumatic wheel with 5/8" bore may be mounted (such as 92936).

### 13220 Versatility Kit

- Includes 13204 Dynastraight; 94472 Dynacushion® Pneumatic Wheel; 94465 Wheel Inflation Tool (1/4" NPT); 94300 Dynaswivel® (1/4" NPT); 13016 Arbor; assortment of abrasives.



13204 Dynastraight® powers optional 94472 Dynacushion® pneumatic wheel on stainless steel.



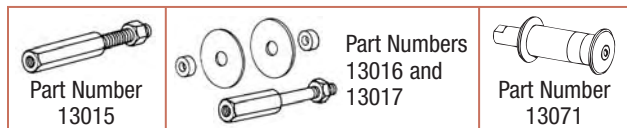
### Model 13502 3,400 RPM, 1 hp

- 13016 Arbor for up to 2" wide x 1/2" I.D. wheels. Any accessory with 1/2" dia. bore may be mounted.
- Ideal set-up for optional surface conditioning discs (shown).

### Model 13503 3,400 RPM, 1 hp

- 13017 Arbor for up to 2" wide x 5/8" I.D. wheels. Any accessory with 5/8" dia. bore may be mounted.

### Arbors



See page 186 for detailed arbor information.



Disc Sold Separately

Model Number	Motor hp (W)	Motor RPM	Sound Level	Maximum Air Flow SCFM (LPM)	Wheel Arbor Diameter	Air Inlet Thread	Tool Thread	Weight Pound (kg)	Length Inch (mm)	Height Inch (mm)
13201	.7 (522)	3,400	82 dB(A)	35 (977)	1/2"	1/4" NPT	1/2"-20 Male	3.9 (1.8)	13-5/8 (346)	1-3/4 (44)
13202	.7 (522)	3,400	82 dB(A)	35 (977)	5/8"	1/4" NPT	1/2"-20 Male	3.9 (1.8)	13-5/8 (346)	1-3/4 (44)
13204	.7 (522)	3,400	82 dB(A)	35 (977)	5/8"-11	1/4" NPT	1/2"-20 Male	3.8 (1.7)	14-5/8 (371)	1-3/4 (44)
13205	.7 (522)	3,400	82 dB(A)	35 (977)	5/8" or 1"	1/4" NPT	1/2"-20 Male	4.0 (1.8)	13-5/8 (346)	1-3/4 (44)
13502	1 (744)	3,400	80 dB(A)	43 (1,218)	1/2"	3/8" NPT	1/2"-20 Male	4.3 (2.0)	15-1/8 (384)	1-7/8 (48)
13503	1 (744)	3,400	80 dB(A)	43 (1,218)	5/8"	3/8" NPT	1/2"-20 Male	4.2 (1.9)	13-7/8 (353)	1-7/8 (48)

**Tune-Up Kit:** .7 hp Model – No. 96260; 1 hp Model – No. 96532 (page 192) • Additional Specifications: Hose I.D. Size 3/8" (10 mm) • Air Pressure 90 PSIG (6.2 Bar)


**FASTTRACK**

Pneumatic Wheels: Page 182 • Abrasives: Page 208 • Accessories: Page 159

# Dynastraight®

## Air-Powered Abrasive Finishing Tool

**ABRASIVE CAPACITY**  
**PNEUMATIC WHEELS, CONDITIONING DISCS, FLAP WHEELS**  
 Up to 8" (203 mm) diameter

**For Graining, Cleaning and Polishing on Stainless Steel, Aluminum, Carbon Steel, Composites**

### Model 13505 3,400 RPM, 1 hp

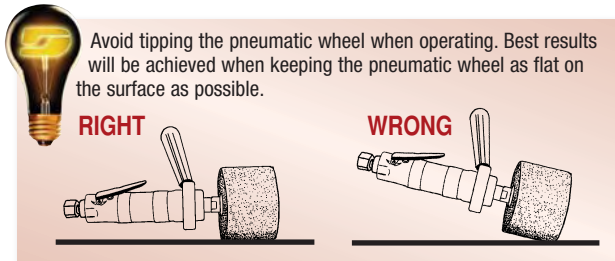
- 13015 Threaded Arbor (5/8" -11) ideal for use with optional 94472 Dynacushion® pneumatic wheel (shown).

### Model 13506 3,400 RPM, 1 hp

- 13071 Combo Arbor for up to 3" wide wheels with 5/8" or 1" diameter center hole. Any Dynacushion® pneumatic wheel with 5/8" dia. bore (such as 92936) may be mounted.

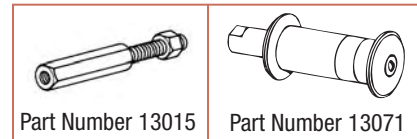


13505 Dynastraight® powers optional 94472 Dynacushion® pneumatic wheel.



Avoid tipping the pneumatic wheel when operating. Best results will be achieved when keeping the pneumatic wheel as flat on the surface as possible.

### Arbors



See page 186 for detailed arbor information.

### Model 13512 3,400 RPM, 6" Extension, 1 hp

- 1/2" diameter arbor for up to 2" wide x 1/2" I.D. wheels. Any accessory with 1/2" diameter bore may be mounted.
- Ideal set-up for optional surface conditioning discs (shown).
- Cushioned grip enhances operator comfort.

### Model 13515 3,400 RPM, 6" Extension, 1 hp

- Ideal set-up for optional Dynacushion® wheel.
- Includes threaded arbor for exclusive use with up to 3-1/2" wide pneumatic wheels (wheel not included) with threaded 5/8"-11 center hole (such as 94472).
- Cushioned grip enhances operator comfort.

### Model 13516 3,400 RPM, 6" Extension, 1 hp

- 13071 Combo Arbor, for up to 3" wide wheels with 5/8" or 1" diameter center hole.
- Any Dynacushion® pneumatic wheel with 5/8" dia. bore (such as 92936) may be mounted.
- Cushioned grip enhances operator comfort.



Disc Sold Separately



13515 Dynastraight® sets grain pattern in stainless steel.

Model Number	Motor hp (W)	Motor RPM	Sound Level	Maximum Air Flow SCFM (LPM)	Wheel Arbor Diameter	Air Inlet Thread	Tool Thread	Weight Pound (kg)	Length Inch (mm)	Height Inch (mm)
13505	1 (744)	3,400	80 dB(A)	43 (1,218)	5/8"-11 Male	3/8" NPT	1/2"-20 Male	4.2 (1.9)	16-1/8 (409)	1-7/8 (48)
13506	1 (744)	3,400	80 dB(A)	43 (1,218)	5/8" or 1"	3/8" NPT	1/2"-20 Male	4.4 (2.0)	14-1/2 (369)	1-7/8 (48)
13512	1 (744)	3,400	80 dB(A)	43 (1,218)	1/2"	3/8" NPT	-	4.4 (2.0)	18-1/2 (471)	1-7/8 (48)
13515	1 (744)	3,400	80 dB(A)	43 (1,218)	5/8"-11 Male	3/8" NPT	-	4.1 (1.9)	18-5/8 (472)	1-7/8 (48)
13516	1 (744)	3,400	80 dB(A)	43 (1,218)	5/8" or 1"	3/8" NPT	-	4.7 (2.1)	18-3/4 (475)	1-7/8 (48)

Tune-Up Kit: No. 96532 (page 192) • Additional Specifications: Hose I.D. Size 3/8" (10 mm) • Air Pressure 90 PSIG (6.2 Bar)





# Dynastraight®

## Air-Powered Abrasive Finishing Tool

**ABRASIVE CAPACITY**  
**PNEUMATIC WHEELS, CONDITIONING DISCS, FLAP WHEELS**  
 Up to 8" (203 mm) diameter

For Material Removal on Stainless Steel, Aluminum, Carbon Steel, Composites

### Model 13206 4,500 RPM, .7 hp

- 13016 Arbor for up to 2" wide x 1/2" I.D. wheels.
- Accessories with 1/2" dia. bore (maximum speed of 4,500 RPM) may be mounted.

### Model 13207 4,500 RPM, .7 hp

- 13071 Combo Arbor, for up to 3" wide wheels with 5/8" or 1" dia. center hole.
- Accessories with 5/8" dia. bore (maximum speed of 4,500 RPM) may be mounted.

### Model 13214 4,500 RPM, .7 hp

- 13072 Threaded Arbor (5/8"-11), ideal for use with optional 92921 DynaWheel (5" dia. x 1" wide). See page 183.

### Model 13507 4,500 RPM, 1 hp

- 13016 Arbor for up to 2" wide x 1/2" I.D. wheels.

### Model 13508 4,500 RPM, 1 hp

- 13071 Combo Arbor for up to 3" wide wheels with 5/8" or 1" dia. center hole.

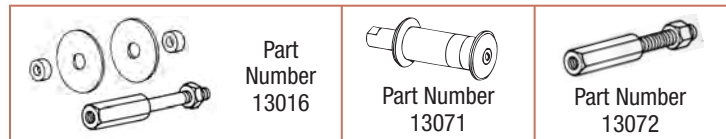
### Model 13523 4,500 RPM, 1 hp

- 13072 Threaded Arbor (5/8"-11 male) for exclusive use with optional 92867 or 92868 DynaWheel (5" dia. x 1-1/2" wide). See page 182.



Left:  
 Optional 92867 DynaWheel on 13523 Dynastraight®, for concentrated grinding and fast material removal.

### Arbors



See page 186 for detailed arbor information.

### Model 13517 4,500 RPM, 6" Extension, 1 hp

- 1/2" diameter arbor for up to 2" wide x 1/2" I.D. wheels.

### Model 13518 4,500 RPM, 6" Extension, 1 hp

- 13071 Combo Arbor, for up to 3" wide wheels with 5/8" or 1" dia. center hole.

### Model 13520 4,500 RPM, 6" Extension, 1 hp

- Threaded arbor for use with up to 3-1/4" dia. pneumatic wheels with threaded 5/8"-11 center hole.
- Cushioned grip enhances comfort (all extension models).



Models 13517, 13518 and 13520 are ideal for use with optional coated abrasive flap wheels (shown) and non-woven nylon wheels.

Model Number	Motor hp (W)	Motor RPM	Sound Level	Maximum Air Flow SCFM (LPM)	Wheel Arbor Diameter	Air Inlet Thread	Tool Thread	Weight Pound (kg)	Length Inch (mm)	Height Inch (mm)
13206	.7 (522)	4,500	82 dB(A)	40 (1,133)	1/2"	1/4" NPT	1/2"-20 Male	3.9 (1.8)	13-5/8 (346)	1-3/4 (44)
13207	.7 (522)	4,500	82 dB(A)	40 (1,333)	5/8" or 1"	1/4" NPT	1/2"-20 Male	4.0 (1.8)	13-5/8 (346)	1-3/4 (44)
13214	.7 (522)	4,500	82 dB(A)	40 (1,333)	5/8"-11 Male	1/4" NPT	1/2"-20 Male	4.0 (1.8)	13-5/8 (346)	1-3/4 (44)
13507	1 (744)	4,500	80 dB(A)	41 (1,161)	1/2"	3/8" NPT	1/2"-20 Male	4.3 (2.0)	15-1/8 (384)	1-7/8 (48)
13508	1 (744)	4,500	80 dB(A)	41 (1,161)	5/8" or 1"	3/8" NPT	1/2"-20 Male	4.4 (2.0)	15-1/2 (370)	1-7/8 (48)
13517	1 (744)	4,500	80 dB(A)	41 (1,161)	1/2"	3/8" NPT	—	4.4 (2.0)	18-1/2 (471)	1-7/8 (48)
13518	1 (744)	4,500	80 dB(A)	41 (1,161)	5/8" or 1"	3/8" NPT	—	4.7 (2.1)	18-3/4 (475)	1-7/8 (48)
13520	1 (744)	4,500	80 dB(A)	41 (1,161)	5/8"-11 Male	3/8" NPT	—	4.4 (2.0)	18-5/8 (472)	1-7/8 (48)
13523	1 (744)	4,500	80 dB(A)	41 (1,161)	5/8"-11 Male	3/8" NPT	1/2"-20 Male	4.3 (2.0)	14-1/2 (366)	1-7/8 (48)

Tune-Up Kit: .7 hp Model – No. 96260; 1 hp Model – No. 96532 (page 192) • Additional Specifications: Hose I.D. Size 3/8" (10 mm) • Air Pressure 90 PSIG (6.2 Bar)



# Dynastraight® Kits

## Versatility Kits with Finishing Tool and DynaWheel



For Material Removal on Stainless Steel, Aluminum, Carbon Steel, Composites

### 13215 Versatility Kit

- 13214 Dynastraight® (4,500 RPM), with 13072 Threaded Arbor (5/8"-11).
- 92921 DynaWheel (5" dia. x 1" wide), ideal for heavy-duty applications.
- 98091 "DynaPump" Air Pump, for quick inflation of pneumatic wheels.
- 89186 Coated Abrasive Belt (60 grit), 1" wide x 15-1/2" long.



Model 13215

### 13535 Versatility Kit

- 13523 Dynastraight® (4,500 RPM), with 13072 Threaded Arbor (5/8"-11).
- 92867 DynaWheel (5" dia. x 1-1/2" wide), ideal for heavy-duty applications.
- 98091 "DynaPump" Air Pump, for quick inflation of pneumatic wheels.
- Three 89182 Coated Abrasive Belts (60 grit), 1-1/2" wide x 15-1/2" long.



Model 13535



When using pneumatic wheels, inflate wheel only enough to hold the abrasive belt without slippage. Over-inflating the wheel can lead to "chatter marks" on the surface.

# Dynastraight® Kit

## Versatility Kit with Finishing Tool and Dynacushion® Wheel

For Material Removal on Stainless Steel, Aluminum, Carbon Steel, Composites

### 13525 Versatility Kit

- 13505 Dynastraight® (3,400 RPM), with 13015 Threaded Arbor (5/8"-11).
- 94472 Dynacushion® (5" dia. x 3-1/2" wide), ideal for a variety of applications.
- 98091 "DynaPump" Air Pump, for quick inflation of pneumatic wheels.
- 89173 Coated Abrasive Belt (120 grit), 3-1/2" wide x 15-1/2" long.
- NEW 89174 Coated Abrasive Belt (180 grit), 3-1/2" wide x 15-1/2" long.
- 89242 Non-Woven Nylon Belt (medium), 3-1/2" wide x 15-1/2" long.



Model 13525





# Dynastraight®

## Air-Powered Abrasive Finishing Tool

**ABRASIVE CAPACITY**  
**PNEUMATIC WHEELS, CONDITIONING DISCS, FLAP WHEELS**  
 Up to 8" (203 mm) diameter

**For Material Removal on Stainless Steel, Aluminum, Carbon Steel, Composites**

### Model 13509 6,000 RPM, 1 hp

- 13071 Combo Arbor, for up to 3" wide wheels with 5/8" or 1" diameter center hole.
- Ideal for use with optional 94507 Dynacushion® Pneumatic Wheel (3-1/4" dia. x 3" wide x 5/8" bore).

### Model 13519 6,000 RPM, 6" Extension, 1 hp

- Threaded arbor for use with up to 3-1/4" diameter pneumatic wheels with threaded 5/8"-11 center hole (such as 94508 Dynacushion®).
- Cushioned grip enhances operator comfort.



Model Number	Motor hp (W)	Motor RPM	Sound Level	Maximum Air Flow SCFM (LPM)	Wheel Arbor Diameter	Air Inlet Thread	Tool Thread	Weight Pound (kg)	Length Inch (mm)	Height Inch (mm)
13509	1 (744)	6,000	82 dB(A)	44 (1,256)	5/8" or 1"	3/8" NPT	1/2"-20 Male	4.3 (2.0)	14-1/2 (369)	1-7/8 (48)
13519	1 (744)	6,000	83 dB(A)	44 (1,256)	5/8"-11 Male	3/8" NPT	N/A	4.4 (2.0)	18-5/8 (472)	1-7/8 (48)

**Tune-Up Kit: No. 96532** (page 192) • Additional Specifications: Hose I.D. Size 3/8" (10 mm) • Air Pressure 90 PSIG (6.2 Bar)

# Lightweight Dynastraight®

## Air-Powered Abrasive Finishing Tool

**ABRASIVE CAPACITY**  
**PNEUMATIC WHEELS, CONDITIONING DISCS, FLAP WHEELS**  
 Up to 8" (203 mm) diameter

**Tough, Lightweight Tool for Consistent Finishes**

- All models include 13061 Multi-Purpose Arbor for mounting optional abrasive wheels 1/2" to 3" wide (1/2" increments) with 5/8" or 1" center hole.

### Model 13100 950 RPM, .4 hp

- Accepts optional accessories with 5/8" bore.
- Also speed-mated for 8" dia. sanding stars. An ideal way to whitewood sand, sealer sand and defuzz.

### Model 13101 3,200 RPM, .4 Hp

### Model 13102 5,000 RPM, .4 Hp

- Ideal for 1/2" to 3" wide abrasive impregnated non-woven nylon wheels.
- Achieves smooth finishes on stainless steel and composites used in kitchen and bath industries.
- Mount Abrasive Belts with optional 94507 Dynacushion® Pneumatic Wheel (3-1/4" dia. x 3" wide x 5/8" bore). Models 13101 and 13102 only.

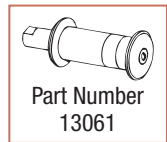


13101 Dynastraight® fitted with optional non-woven nylon wheel.



Many Dynastraight® operators find that it is easier to achieve a straight-line pattern by moving the tool in a faster back-and-forth stroke.

### Arbor



Model Number	Motor hp (W)	Motor RPM	Sound Level	Maximum Air Flow SCFM (LPM)	Wheel Arbor Diameter	Air Inlet Thread	Tool Thread	Weight Pound (kg)	Length Inch (mm)	Height Inch (mm)
13100	.4 (298)	950	82 dB(A)	22 (623)	5/8" or 1"	1/4" NPT	3/8"-24 Male	2.2 (1.0)	13-1/4 (337)	1-5/8 (40)
13101	.4 (298)	3,200	81 dB(A)	22 (623)	5/8" or 1"	1/4" NPT	3/8"-24 Male	2.2 (1.0)	11-1/2 (292)	1-5/8 (40)
13102	.4 (298)	5,000	84 dB(A)	22 (623)	5/8" or 1"	1/4" NPT	3/8"-24 Male	2.2 (1.0)	11-1/2 (292)	1-5/8 (40)

**Tune-Up Kit: No. 96173** (page 192) • Additional Specifications: Hose I.D. Size 1/4" (6 mm) • Air Pressure 90 PSIG (6.2 Bar)



# Dynastraight® Flapper

## Air-Powered Abrasive Finishing Tool

**ABRASIVE CAPACITY**  
**ABRASIVE FLAP WHEELS**  
 Up to 3" (76 mm) diameter

**For Polishing Insides of Pipe and Tubing; Excellent for Light Deburring**

- Remove rust, oxide and scale; clean welds, remove paint and surface condition using abrasive flap wheels.
- Adjustable speed, lever throttle, front exhaust.

**Model 51130 18,000 RPM, .5 hp**

- Includes 51029 Flap Wheel Adapter.
- Shown with optional 90831 abrasive flap wheel, 2-1/2" dia. x 1" wide.



**Dynaswivel®** air line connector is ideal for use with most air tools. The Dynaswivel® improves tool maneuverability, minimizes operator fatigue and extends hose life. (See page 163.)

**Model 51301 18,000 RPM, .5 hp**

- Includes 1/4" collet.

**Model 51134 18,000 RPM, 8" Extension, .5 hp**

- Includes 51116 Adapter.
- Shown with optional 90831 abrasive flap wheel, 2-1/2" dia. x 1" wide.



**Model 53501 18,000 RPM, 8" Extension, .5 hp**

- Includes 1/4" collet.

**IMPORTANT: Speed of tool must not exceed maximum operating speed of accessory. Always wear eye, face and body protection.**

Model Number	Motor hp (W)	Motor RPM	Sound Level	Maximum Air Flow SCFM (LPM)	Hose I.D. Size Inch (mm)	Air Inlet Thread	Tool Thread	Weight Pound (kg)	Length Inch (mm)	Height Inch (mm)
51130	.5 (373)	18,000	81 dB(A)	30 (850)	3/8 (10)	1/4" NPT	3/8"-24 Male	1.8 (0.8)	7 (178)	1-3/4 (44)
51134	.5 (373)	18,000	75 dB(A)	30 (850)	3/8 (10)	1/4" NPT	3/8"-24 Male	3.4 (1.5)	17-1/8 (435)	1-7/8 (48)
51301	.5 (373)	18,000	81 dB(A)	24 (680)	3/8 (10)	1/4" NPT	3/8"-24 Male	1.5 (0.7)	7 (178)	1-7/8 (48)
53501	.5 (373)	18,000	75 dB(A)	30 (850)	3/8 (10)	1/4" NPT	-	3.2 (1.5)	17-7/8 (454)	1-7/8 (48)

**Tune-Up Kit: No. 95600** (Extension Models – **No. 96007**) (page 192) • Additional Specifications: Air Pressure 90 PSIG (6.2 Bar)

# Lightweight Dynastraight® Plus

## Air-Powered Abrasive Finishing Tool

**Built-In Holder for 3M Roloc and Roloc+ Products**

**Model 13120 3,200 RPM, .4 hp**

**Model 13121 5,000 RPM, .4 hp**

- Includes 51115 Roloc Adapter Assembly.
- Has built-in speed control, rear exhaust, lever throttle.
- Mount optional abrasive directly to tool.
- Accepts flap brushes and wheels, Cut 'n Polish wheels, Clean 'n Strip® wheels, coated abrasive discs, Scotch-Brite® discs.



Roloc+, Roloc, Clean 'n Strip, and Scotch-Brite are registered trademarks of 3M Company.

Model Number	Motor hp (W)	Motor RPM	Sound Level	Maximum Air Flow SCFM (LPM)	Hose I.D. Size Inch (mm)	Air Inlet Thread	Holder Thread	Weight Pound (kg)	Length Inch (mm)	Height Inch (mm)
13120	.4 (298)	3,200	81 dB(A)	22 (623)	3/8 (10)	1/4" NPT	Female Roloc	1.8 (.8)	8-1/2 (216)	1-5/8 (40)
13121	.4 (298)	5,000	84 dB(A)	22 (623)	3/8 (10)	1/4" NPT	Female Roloc	1.8 (.8)	8-1/2 (216)	1-5/8 (40)

**Tune-Up Kit: No. 96173** (page 192) • Additional Specifications: Air Pressure 90 PSIG (6.2 Bar)



**FASTTRACK**



# DynaRover

## Air-Powered Abrasive Finishing Tool

**NEW!**

ABRASIVE  
CAPACITY

### BRISTLE BRUSHES

6" (152 mm) diameter, 36 Grit  
Available from 3M Company

Walk-Behind Tool Utilizes Dynastraight® to Clean Weld Seam Corrosion and Various Surfaces

Dynabrade has engineered a walk-behind tool affixed with 6,000 RPM Dynastraight® (sold separately) and 3M™ Scotch-Brite™ Bristle Brushes (sold separately), to effectively clean surfaces, such as removing corrosion from weld seams on ship decks.

### Model 13340

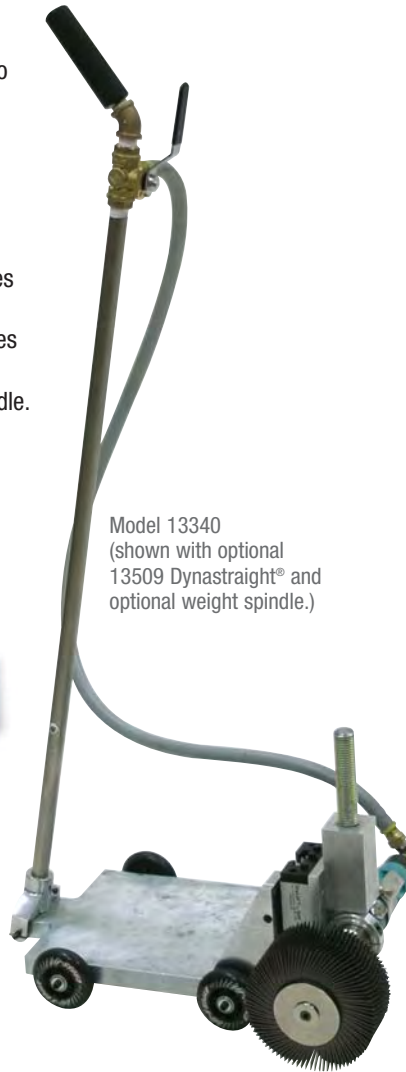
- Use DynaRover in conjunction with model 13509 Dynastraight® (must be ordered separately).
- Attached multiple 3M™ Scotch-Brite™ Bristle Brushes (sold separately) for widths up to 4".
- 37" handle length with 45° angle foam grip provides ergonomic comfort.
- On/off airflow valve is easily accessible on the handle.
- Remove the Dynastraight® from the DynaRover to clean weld on vertical surfaces.



For optimum use of DynaRover, 1/2" (13 mm) air inlet is required.



Maximize surface cleaning efficacy with 90 PSIG (6.2 Bar) air flow.



Model 13340  
(shown with optional  
13509 Dynastraight® and  
optional weight spindle.)



DynaRover cleaning a butt weld.  
(Shown with optional weight spindle.)



DynaRover cleaning an angle weld.



Weld seam cleaned with DynaRover.

### 13370 Optional Vacuum Shroud

- Easily attachable vacuum shroud accessory allows operator to capture corrosion particulate. (Vacuum not included).

### 97355 Optional Weight Spindle

- Optional spindle above Dynastraight® holds additional weight; helps to maintain contact with the weld surface. Weights not included.



Optional 13370  
Vacuum Shroud



Operator places weights (sold separately) onto optional weight spindle of DynaRover.

Scotch-Brite is a registered trademark of 3M Company.



# Rolling Pin Sander

## Air-Powered Abrasive Finishing Tool

**ABRASIVE CAPACITY**  
**PNEUMATIC WHEEL**  
 3-1/4" dia. x 7" long  
 (83 mm dia. x 178 mm long)

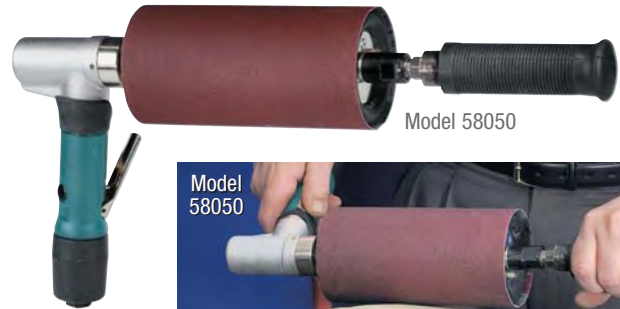
**For Sanding and Finishing on Contoured Shapes**

### Model 58050 3,200 RPM, .4 hp

- Unique offset handle to control torque.
- Includes 94434 Pneumatic Wheel, 3-1/4" dia. x 7" long. Wheel inflates to 20 PSI max.
- Designed for use with coated abrasive and non-woven nylon belts.



Wheel conforms to wood and metal, and easily inflates/deflates for quick abrasive belt change.



Model 58050



Model 58050

Model Number	Motor hp (W)	Motor RPM	Sound Level	Maximum Air Flow SCFM (LPM)	Hose I.D. Size Inch (mm)	Air Inlet Thread	Tool Thread	Weight Pound (kg)	Length Inch (mm)	Height Inch (mm)
58050	.4 (298)	3,200	82 dB(A)	24 (668)	3/8 (10)	1/4" NPT	5/8"-11 male	5 (2.3)	17-3/4 (452)	3-1/4 (83)

**Tune-Up Kit: No. 96174** (page 192) • Additional Specifications: Air Pressure 90 PSIG (6.2 Bar)

# Mini-Dynisher®

## Air-Powered Abrasive Finishing Tool

**ABRASIVE CAPACITY**  
**PNEUMATIC WHEELS**  
 Up to 5" (127 mm) diameter

**Achieves Superior In-Line Finishes on Metal**

- Powers optional Dynacushion® pneumatic wheel. Finish virtually any shape, contour or material, including stainless steel, aluminum, carbon steel, copper, brass, plastic, fiberglass, composites, wood, etc.

### Model 13301 950 RPM, .4 hp

- Ideal for use with optional 92938 Dynacushion® pneumatic wheel (5" dia. x 3-1/2" wide).
- Large shroud allows for up to 6" diameter accessories.

### Model 13300 3,200 RPM, .4 hp

- Ideal for use with optional 94507 Dynacushion® pneumatic wheel (3-1/4" dia. x 3" wide).
- Shroud allows for up to 4-1/2" diameter accessories.

### 13310 Versatility Kit

- 13300 Mini-Dynisher®; 94507 Dynacushion® pneumatic wheel (3-1/4" dia. x 3" wide); 94465 Wheel Inflation Tool; ceramic coated aluminum oxide belt and medium grade non-woven nylon belt.



Model 13300

13300 Mini-Dynisher® powers optional 94507 Dynacushion® pneumatic wheel on stainless steel.



Model 13310

Model Number	Motor hp (W)	Motor RPM	Sound Level	Maximum Air Flow SCFM (LPM)	Wheel Arbor Diameter	Hose I.D. Size	Air Inlet Thread	Weight Pound (kg)	Length Inch (mm)	Height Inch (mm)
13300	.4 (298)	3,200	80 dB(A)	21 (595)	5/8"	1/4 (6)	1/4" NPT	2.8 (1.3)	10 (254)	7 (178)
13301	.4 (298)	950	81 dB(A)	21 (595)	5/8"	1/4 (6)	1/4" NPT	3.4 (1.5)	10 (254)	7 (178)

**Tune-Up Kit: No. 96174** (page 192) • Additional Specifications: Air Pressure 90 PSIG (6.2 Bar)





# Dynisher®

## Air-Powered Abrasive Finishing Tool

**ABRASIVE  
CAPACITY**
**PNEUMATIC WHEELS,  
CONDITIONING DISCS,  
FLAP WHEELS**  
Up to 5" (127 mm) diameter

**Achieves Superior In-Line Finishes on Metal**

### Model 13400 3,400 RPM, .7 hp

- Excellent for blending and finishing stainless steel and other metals, leaving an in-line scratch pattern.
- Operator uses back-and-forth motion; guard can be adjusted for work right up to side walls.
- Arbor (3/4" dia.) included for mounting a variety of abrasives and accessories.
- Variable speed control and safety-lock lever throttle.
- Ideal for use with optional 92938 Dynacushion® pneumatic wheel (5" dia. x 3-1/2" wide).

### 13410 Versatility Kit

- Includes 13400 Dynisher® with 92938 Dynacushion® pneumatic wheel (5" dia. x 3-1/2" wide), two abrasive belts and 94465 Inflation Tool.

### Model 13401 3,400 RPM, .7 hp, Metric

- For use with optional 94495 Dynacushion® pneumatic wheel (90 mm x 100 mm wide).

### 13411 Versatility Kit Metric

- Includes 13401 Dynisher® with 94495 Dynacushion® pneumatic wheel (90 mm x 100 mm wide), two abrasive belts and 94465 Inflation Tool.



### Model 13450 2,800 RPM, 1 hp

- Ideal set-up for optional 92938 Dynacushion® pneumatic wheel.
- Great for refinishing stainless steel sinks, stainless steel kitchen countertops, etc.
- Slower speed achieves deeper and longer grain pattern in work surface.

### 13460 Versatility Kit

- Includes Model 13450 Dynisher®; 92938 Dynacushion® pneumatic wheel; 94465 Wheel Inflation Tool; 80-grit belt; medium-grade belt; 95541 Grease Gun; 95542 Grease and 95848 Gear Oil.



When using pneumatic wheels, inflate wheel only enough to hold the abrasive belt without slippage. Over-inflating the wheel can lead to "chatter marks" on the surface.



13450 Dynisher® powers optional 92938 Dynacushion® pneumatic wheel.

Model Number	Motor hp (W)	Motor RPM	Sound Level	Maximum Air Flow SCFM (LPM)	Wheel Arbor Diameter Inch (mm)	Hose I.D. Size Inch (mm)	Air Inlet Thread	Weight Pound (kg)	Length Inch (mm)	Height Inch (mm)
13400	.7 (522)	3,400	84 dB(A)	41 (1,161)	3/4 (19)	3/8 (10)	1/4" NPT	4.5 (2.0)	13-1/2 (343)	9 (229)
13401	.7 (522)	3,400	84 dB(A)	41 (1,161)	3/4 (19)	3/8 (10)	1/4" NPT	4.5 (2.0)	13-1/2 (343)	9 (229)
13450	1 (744)	2,800	80 dB(A)	41 (1,161)	3/4 (19)	3/8 (10)	3/8" NPT	5.7 (2.6)	15 (381)	7 (180)

**Tune-Up Kit:** .7 hp Models – No. 96234; 1 hp Model – No. 96532 (page 192) • Additional Specifications: Air Pressure 90 PSIG (6.2 Bar)


**FASTTRACK**

Pneumatic Wheels: Page 182 • Abrasives: Page 208 • Accessories: Page 159

# Electric Dynisher®

## Electric-Powered Abrasive Finishing Tool

**ABRASIVE CAPACITY**  
**PNEUMATIC WHEELS, CONDITIONING DISCS, FLAP WHEELS**  
 Up to 5" (127 mm) diameter

**Achieves Superior In-Line Finishes on Metal**

### Model 13415 120 V (AC), 3,000 RPM

- Ideal for graining, blending, brushing and polishing. Utilized in a variety of industries, on stainless steel and other metals, as well as plastic, composites and more.
- Variable tool speed of 0-3,000 RPM. Operator can pre-select speed to suit each application.
- Electronic module maintains specified tool speed under load.
- Variable speed trigger allows operator to control speed from 0 to selected setting.
- Operator moves tool in easy front-to-back motion, for achieving in-line scratch pattern. Tool guard is adjustable for most efficient use.
- 5/8"-11 spindle and 3/4" arbor allow mounting of a variety of accessories and abrasives.
- Tool accepts optional 92938 Dynacushion® Pneumatic Wheel (5" dia. x 3-1/2" wide) and Non-Woven Nylon Wheels. Great versatility!
- Strong 835-watt power output gets the job done fast!



13415 Electric Dynisher® fitted with optional 92938 Dynacushion® Pneumatic Wheel and coated abrasive belt. An ideal setup for achieving in-line scratch pattern on stainless steel.



When using pneumatic wheels, inflate wheel only enough to hold the abrasive belt without slippage. Over-inflating the wheel can lead to "chatter marks" on the surface.



Operator moves Electric Dynisher® in easy front-to-back motion, with tool guard adjustable for optimum use. Pneumatic Wheel is optional.

Electric Dynisher®	Motor RPM	Maximum Watts Out	Voltage	Current Amps	Phase	Frequency	Weight Pound (kg)	Length Inch (mm)	Height Inch (mm)
13415	0 - 3,000	835	120 V (AC)	9	1	60 Hz	8.4 (3.8)	18-3/8 (468)	8-1/4 (209)





# Dyninger®

## Air-Powered Abrasive Finishing Tool

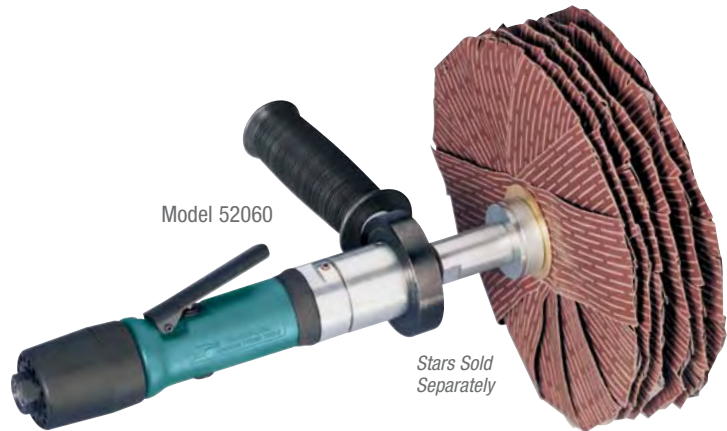
Sand, Defuzz, Blend, Scuff, Denib

ABRASIVE  
CAPACITY

ABRASIVE STARS  
8" (203 mm) diameter

### Model 52060 950 RPM, .4 hp

- High torque air motor includes arbor (1" dia.) for mounting up to six coated abrasive stars, 8" diameter with 1" center hole (sold separately).
- Excellent for blending and scuffing sealer coatings on contours and flat surfaces. Whitewood sand raised panels, turnings, moldings and hard-to-reach areas.
- Defuzz wooden grid pattern panels and denibbing raised grain.
- Great for light deburring of metal.



### 52061 Basic Versatility Kit

- 52060 Dyninger with 1" dia. arbor.
- 93245 Six Coated Abrasive Stars (120 grit).
- 93251 Six Coated Abrasive Stars (320 grit).
- 52031 Abrasive Dressing Plate.

### 52062 Deluxe Versatility Kit

- 52060 Dyninger with 1" dia. arbor.
- 93245 Six Coated Abrasive Stars (120 grit).
- 93251 Six Coated Abrasive Stars (320 grit).
- 52031 Abrasive Dressing Plate.
- 80020 Dynamount® Tool Bench Mount.
- 95745 Speed Control.



For best performance of all sanding stars, prior to application "dress" the abrasive tips against optional 52031 Stainless Steel Abrasive Dressing Plate or equivalent. Also, a piece of hardwood such as oak will do. Dressing will break the stiffness, or flex the abrasives, resulting in a more consistent finish.



Sanding Stars are ideal for work on intricate profiles.

Model Number	Motor hp (W)	Motor RPM	Sound Level	Maximum Air Flow SCFM (LPM)	Wheel Arbor Dia. Inch (mm)	Air Inlet Thread	Tool Thread	Weight Pound (kg)	Length Inch (mm)	Height Inch (mm)
52060	.4 (298)	200-950	82 dB(A)	22 (623)	5/8" or 1"	1/4" NPT	3/8"-24 Male	3.7 (1.7)	11-1/8 (283)	2-3/4 (70)

Tune-Up Kit: No. 96173 (page 192) • Additional Specifications: Hose I.D. Size 1/4 (6 mm) • Air Pressure 90 PSIG (6.2 Bar)



FASTTRACK

# Lightweight Dyninger®

## Air-Powered Abrasive Finishing Tool

**ABRASIVE CAPACITY**  
**ABRASIVE STARS**  
 3/4" to 4" diameter  
 (19 mm to 102 mm dia.)

**Use with Spindle-Mount, Arbor-Mount and Eyelet Sanding Stars**

- For whitewood/sealer sanding, light deburring of metal, or fabrication and finishing of composite surfaces.
- Excellent for use on wooden parts, moldings, raised panels and intricate profiles. Eliminates raised grain and removes loose fibers when whitewood sanding as well as scuffing sealer coats.
- Tool includes 94407 Air-Flow Control Dynaswivel® fitting for maximum tool maneuverability and control.

**Model 52050 0-3,200 RPM, .4 hp, 1/4" Collet**

**Model 52051 0-3,200 RPM, .4 hp, 6 mm Collet**

- Mount 4" diameter spindle-mount abrasive sanding stars with 1/4" shank, or Eyelet Dy-Cut sanding stars. (Stars sold separately - see page 192.)



The grit and spacing of the stars determine sanding aggressiveness. We suggest exploring various grit and spacing combinations.

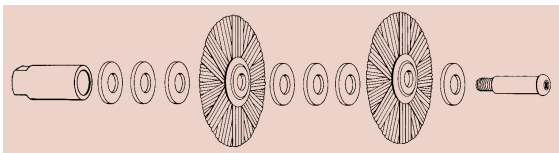


52050 Lightweight Dyninger® with optional spindle-mount stars.

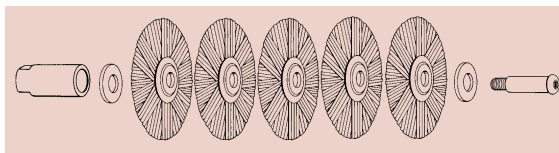
**Model 52052 0-3,200 RPM, .4 hp, Arbor-Mount**

- For running arbor-mount abrasive stars or Dynacushion® wheel.
- Includes 12980 Arbor (1/2" diameter) for mounting up to five 4" diameter arbor-mount sanding stars (1/2" center hole). Arbor includes spacers to be used between the stars for added flexibility. (Stars sold separately, see page 192.)
- Tool includes 94407 Air-Flow Control Dynaswivel® fitting for maximum tool maneuverability and control.

**Least Aggressive/Most Flexible**



**Most Aggressive/Less Flexible**



52052 Lightweight Dyninger® with single arbor-mount star attached.

**NOTE:** The rated RPM of a mounted sanding star is reduced when using flexible shafts. When using the flex shaft for finishing inside diameters, place the eyelet sanding star inside the workpiece, then start the tool.

Model Number	Motor hp (W)	Motor RPM	Sound Level	Maximum Air Flow SCFM (LPM)	Hose I.D. Size Inch (mm)	Air Inlet Thread	Tool Thread	Weight Pound (kg)	Length Inch (mm)	Height Inch (mm)
52050	.4 (298)	0-3,200	81 dB(A)	22 (623)	1/4 (6)	1/4" NPT	3/8"-24 male	2.2 (1.0)	9-1/4 (235)	1-5/8 (40)
52051	.4 (298)	0-3,200	81 dB(A)	22 (623)	1/4 (6)	1/4" NPT	3/8"-24 male	2.2 (1.0)	9-1/4 (235)	1-5/8 (40)
52052	.4 (298)	0-3,200	81 dB(A)	22 (623)	1/4 (6)	1/4" NPT	3/8"-24 male	2.2 (1.0)	8-3/4 (222)	1-5/8 (40)

**Tune-Up Kit: No. 96173** (page 192) • Additional Specifications: Air Pressure 90 PSIG (6.2 Bar)



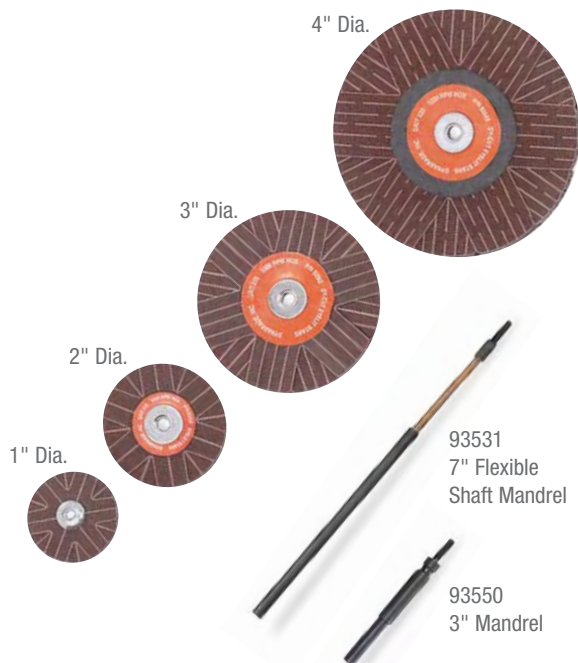


# Eyelet Sanding Stars and Mandrels

*Ideal for Deburring and Polishing Hard-to-Reach Areas*

For Use with Lightweight Dyninger®

- Eyelet sanding stars are available in the following diameters: 3/4", 1", 1-1/2", 2", 3" and 4".
- Use with Lightweight Dyninger models 52050 and 52051, and Die Grinder models. See chart below for maximum operating speeds.
- Excellent for wooden parts, moldings, raised panels and intricate profiles. Eliminates raised grain and removes loose fibers when whitewood sanding as well as scuffing sealer coats.
- Provides uniform, smooth surface for achieving the best top coats.
- Metalworking applications include setting in-line scratch on stainless steel.
- Polish and deburr inside diameters of pipe and tubing.



*3" Eyelet Sanding Star easily enters pipe elbow using 7" long flexible mandrel.*

*Sand and deburr inside small dia. pipe and other hard to reach areas with 3/4" – 1-1/2" stars.*



**NOTE:** The rated RPM of a mounted sanding star is reduced when using flexible shafts. When using the flex shaft for finishing inside diameters, place the eyelet sanding star inside the workpiece, then start the tool.



The grit and spacing of the stars determine sanding aggressiveness. We suggest exploring various grit and spacing combinations.

## CHOOSE EYELET STAR...

Diameter Inch (mm)	Grit						
	80	120	150	180	220	320	400
3/4 (19)	93579	93580	93581	93582	93583	–	–
1 (25)	93586	93587	93588	93589	93590	–	–
1-1/2 (38)	93541	93542	93543	93544	93545	93546	93547
2 (51)	93551	93552	93553	93554	93555	93556	93557
3 (76)	93558	93559	93560	93561	93562	93563	93564
4 (102)	93565	93566	93567	93568	93569	–	–

## ...THEN CHOOSE MANDREL

Mandrel P/N	Length Inch (mm)	Max. Operating Speed	Male Thread
93534	3 (76)	5,000	3-48
93533	7 (178) Flex	3,200	3-48
93548	3 (76)	5,000	8-32
93532	7 (178) Flex	3,200	8-32
93550	3 (76)	5,000	1/4"-20
93531	7 (178) Flex	3,200	1/4"-20
93550	3 (76)	5,000	1/4"-20
93531	7 (178) Flex	3,200	1/4"-20

# Industrial DynaZip

## Industrial-Quality Surface Preparation Tool



**ABRASIVE CAPACITY**  
**WIRE WHEELS AND ERASER WHEELS**  
 4" (102 mm) diameter

**Powers Wire Wheels and Eraser Wheels for Effective Material Removal**

- Industrial DynaZip (3,500 RPM) delivers outstanding power and torque, accepting optional Wire Wheels (4" dia.) and optional Eraser Wheels (4" dia.), for countless material removal applications.
- Tool features three-position handle for the best in operator comfort.
- Fully adjustable wheel guard.
- Quick and easy change of accessories.

### Model 13280 3,500 RPM, Wire Wheel

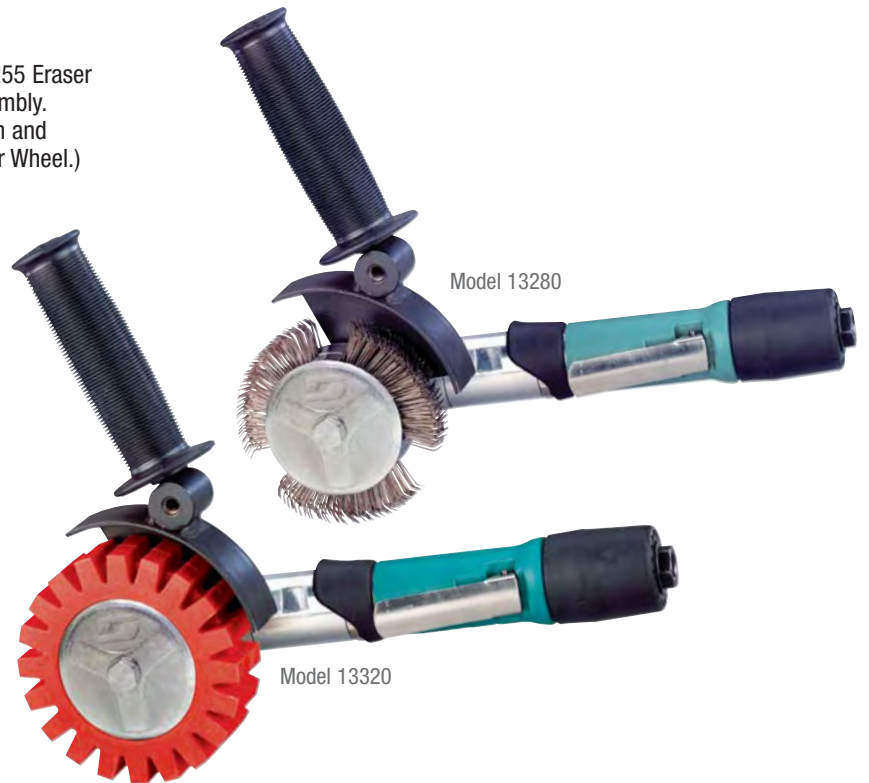
- Tool with wheel guard and handle. Also includes 92245 Wire Wheel (4" dia. x 3/4" wide) and 92284 Hub Assembly. (Hub Assembly includes bolt, hub shield, hub cushion and drive plates for mounting either Wire Wheel or Eraser Wheel.)
- Ideal for removing paint, seam sealer, rust proofing, surface rust and more.
- Tool duplicates sand-blasting effect without surface fatigue.
- DynaZip dramatically outperforms conventional spiral-wound wheels, with no clogging.



13280 DynaZip powers Wire Wheel to remove surface rust and weld spatter from a weld seam.

### Model 13320 3,500 RPM, Eraser Wheel

- Tool with wheel guard and handle. Also includes 92255 Eraser Wheel (4" dia. x 1-3/16" wide) and 92284 Hub Assembly. (Hub Assembly includes bolt, hub shield, hub cushion and drive plates for mounting either Wire Wheel or Eraser Wheel.)
- Outstanding for removal of graphics, decals and two-sided adhesive tapes.
- DynaZip is effective for material removal on painted surfaces, with no damage to base paint.



Dynamawivel® air line connector is ideal for use with most air tools. The Dynamawivel® improves tool maneuverability, minimizes operator fatigue and extends hose life. (See page 163.)

Model Number	Motor hp (W)	Motor RPM	Wheel Dia. Inch (mm)	Sound Level	Maximum Air Flow SCFM (LPM)	Hose I.D. Size Inch (mm)	Air Inlet Thread	Weight Pound (kg)	Length Inch (mm)	Height Inch (mm)
13280	.4 (298)	3,500	4 (102)	79 dB(A)	23 (765)	1/4 (6)	1/4" NPT	3.29 (14.63)	11.5 (293.3)	4.91 (124.7)
13320	.4 (298)	3,500	4 (102)	79 dB(A)	23 (765)	1/4 (6)	1/4" NPT	3.29 (14.63)	11.4 (290.5)	4.91 (124.7)

**Tune-Up Kit: No. 96174** (page 192) • Additional Specifications: Air Pressure 90 PSIG (6.2 Bar)



Wire Wheels: See page 185 • Eraser Wheels: See page 185