



The Science of Compressed Air

QSI 245i-1000i



Quincy QSI



QUINCY QSI 245i-1000i
ROTARY SCREW
AIR COMPRESSOR
50-200 HP

QUINCY QSI



SUPERIOR PERFORMANCE

The Quincy QSI direct-drive rotary screw compressor is more than just your typical “box of air”- it’s the leader in performance. Combine reliability with the most efficient airend available and you start to see a QSI.

Once you combine the time-proven airend turning at a steady 1800 rpm, with a technologically advanced programmable logic controller, you begin to understand what “performance” really means.

Backed by Quincy Compressor’s unique Royal Blue Warranty, the QSI features an exclusive triplex bearing arrangement, triple lip shaft seal and an airend designed to last over 130,000 hours. The QSI delivers maximum air flow with minimum horsepower. The specific power is the lowest in the industry which means you save money. Then listen... Whisper quiet. When you install a QSI, you’re installing the most superior compressor on the market.

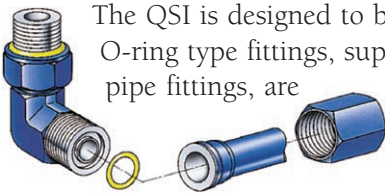
QUINCY QSI SERIES 245i - 500i ROTARY SCREW COMPRESSORS

Performance		245i	220i	300i	250i	370i	335i	500i	440i	600i	750i	1000i
Flow in acfm	100 psig Motor HP	243 50	N/A	286 60	N/A	365 75	N/A	500 100	N/A	599 125	709 150	956 200
	110 psig Motor HP	242 50	N/A	285 60	N/A	364 75	N/A	498 100	N/A	596 125	696 150	952 200
	125 psig Motor HP	240 60	206 50	240 60	240 60	361 100	335 75	495 125	436 100	592 150	681 200	961 250
	150 psig Motor HP	238 60	N/A	234 60	N/A	358 100	N/A	433 125	N/A	584 150	673 165	955 250
Open/Enclosed Sound (dBA)		79/66		79/66		77/68		77/70		80/ 75	80/75	80/75
Connection (NPT)		1.25"		1.25"		2"		2"		2"	2" *	2"
Length inches (mm)		84 (2134)		84 (2134)		91 (2311)		91 (2311)		105 (2667)	105 (2667)	105 (2667)
Width inches (mm)		45 (1143)		45 (1143)		54 (1372)		54 (1372)		73 (1855)	73 (1855)	73 (1855)
Height inches (mm)		74 (1880)		74 (1880)		75 (1905)		75 (1905)		74 (1880)	74 (1880)	74 (1880)
Open Weight pounds (kg)		3050 (1429)		3250 (1565)		4050 (1883)		4250 (2019)		6177 (2802)	6427 (2916)	8098 (3674)
Enclosed Weight pounds (kg)		3250 (1520)		3450 (1656)		4250 (1973)		4450 (2109)		6178 (2803)	6991 (3172)	8663 (3930)

* 2.5" NPT connection on QSI-750i 125 PSIG and 150 PSIG units

SUPERIOR DESIGN

The QSI is designed to be leak-free. SAE O-ring type fittings, superior to standard pipe fittings, are used on all fluid pipe connections larger than 1/4". By using world-leading design and manufacturing tolerances, we've reduced vibration and fatigue thus ensuring the lubricant stays where it's needed.



- Less Noise
- Waste heat recovery
- Less oil disposal
- Crushable filter elements
- Less power consumption

ENCLOSED

- 6" full-color touchscreen display
- Integrated dryer option
- Sound level as low as 66 dBA
- Easy-access panels for convenient maintenance
- Optional Power\$ync Variable Capacity Control



*Shown with optional sound-reducing canopy & controller



*Shown with optional touch screen controller

EVERY QSI...

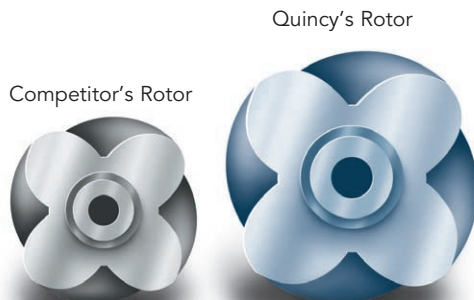
- SAE fittings for trouble-free operation
- Heavy-duty micro-fiber intake filter, 99.7% efficient at 0.1 micron
- Centrifugal moisture separator
- 100, 110 and 125 PSIG
- 10-Year Royal Blue Warranty standard
- Design life over 130,000 hours

QUINCY QSI

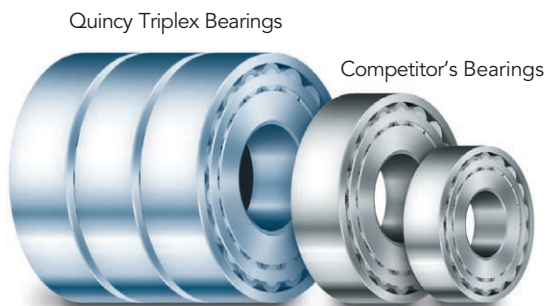
ENGINEERED DURABILITY

Want to replace your compressor in 3-5 years? Buy a competitive compressor. Want a machine with superior performance that lasts over 130,000 hours and saves you money? Buy a Quincy QSI.

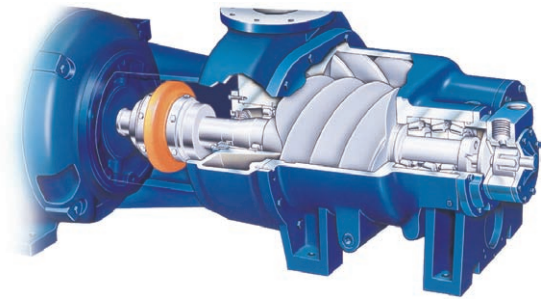
The QSI uses a larger rotor airend, with optimally-designed bearings, that turns at a steady 1800 rpm. The airend rotors are over 50% larger than most competitive compressors and they turn half as fast! What does this mean? It means more air flow per horsepower so you save money on operating costs!



Quincy's rotors are over 62% larger.



Quincy's Triplex bearings are over 56% larger than most competitors, delivering over 130,000 hours of operation.



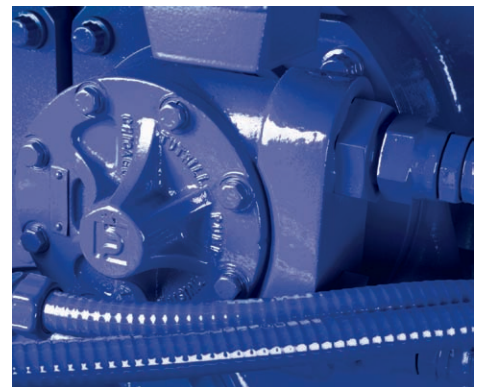
Time proven QSI airend shown with optional direct drive oil pump.

LARGE ROTOR AIREND

- Less leakage. Tighter clearance than smaller airends
- Over 130,000 hours of operation (standard competitor = 40,000 hrs)
- Produces more air
- Oversized bearings

SLOW ROTATION - 1800 RPM

- Less friction
- Increased airend and bearing life
- Uses less power



Optional direct drive oil pump for severe-duty applications.

CONTROLLING YOUR INVESTMENT

You are considering more than just the initial purchase price, because your compressor is more than just a piece of capital equipment. The Quincy QSI has a controller for your application which will help you manage the compressor and your operating costs. After all, energy consumption accounts for over 75% of the total cost of a typical compressor over a 5-year period.



MICROPROCESSOR CONTROL

- Full-color 6" touchscreen display with interactive trend analysis
- Industrial hardened PLC ensures operation in your application
- Network 6 machines, Auto-restart, Auto-dual and Continuous run
- Monitors and graphs compressor performance, alerts, operations, etc.

GAUGE CONTROL

- Great for harsh applications
- Gauges are 2.5", stainless steel back and bezel, both metric and English
- Silicon-dampened dashpot movements give accuracy of liquid-filled gauge without leak possibility
- Five gauges: Pressure, Percent Capacity, Temperature, Separator Differential Pressure and Inlet Air Filter Differential Pressure

QUINCY QSI

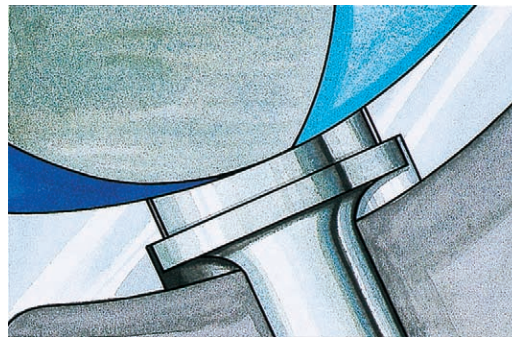


VARIABLE CAPACITY CONTROL

The Quincy Power\$ync® with patented lift valves is a unique design that gives the compressor the ability to function as a base-load machine and a part-load machine.

When you don't need the entire (full load) capacity of the compressor, the QSI Power\$ync quickly decreases the air

flow output so you're not wasting energy making compressed air that you don't need. The QSI does this by using specially designed lift valves, operated by the Power\$ync® controller. These lift valves adjust automatically to match the demand of your application!



Only QSI's Power\$ync has lift valves which are contoured to prevent blow-by and increase efficiency.

OPTIONAL POWER\$YNC® VARIABLE CAPACITY CONTROL*

- Quincy's patented Power\$ync® controls the lift valves on the airend
- Programmable logic controller with 6" touchscreen display
- Network 10 machines, Auto-restart, Auto-dual and Continuous run
- Provides superior energy savings at part load requirements
- Allows your base load machine to function as a trim machine!

* For more information, please see our QSI Power\$ync brochure.

VARIABLE DISPLACEMENT LIFT VALVES

- Machined directly into the airend housing to prevent air leaks (blow-by)
- Contoured to sit directly against rotor
- Double-acting for rapid response and control
- Actuated with internal air pressure, no additional power required
- Superior to VSD machine above 80% load

POWERFUL, EFFICIENT, SILENT



The QSI uses a centrifugal fan to pull fresh air into the compressor. This centrifugal fan design is superior to the typical flat blade fan because it requires less power to operate, increasing the efficiency of the system and saving you money in operating costs. This innovative component also creates far less noise than a standard fan, creating sound levels for the QSI which are among the best in the industry. Lower sound levels create a better work environment for employees and customers, which is priceless.

- Efficient airfoil blade design
- Sound level as low as 66 dBA

QUINCY'S ROYAL BLUE WARRANTY

Everyone says they have the best machine, but how do they support it? Quincy backs the QGD 20-50 with the world's best warranty! Other compressor manufacturers charge extra for similar plans, or for an extended

warranty. Why purchase an empty promise when you can get 10 years of airend coverage standard? The world's best warranty is FREE and it's standard on the QGD 20-50.



WORLD'S BEST WARRANTY - 10-YEAR AIREND WARRANTY, FIVE YEAR WARRANTY ON MAJOR COMPONENTS.

PROUD MEMBER OF COMPRESSED AIR & GAS INSTITUTE



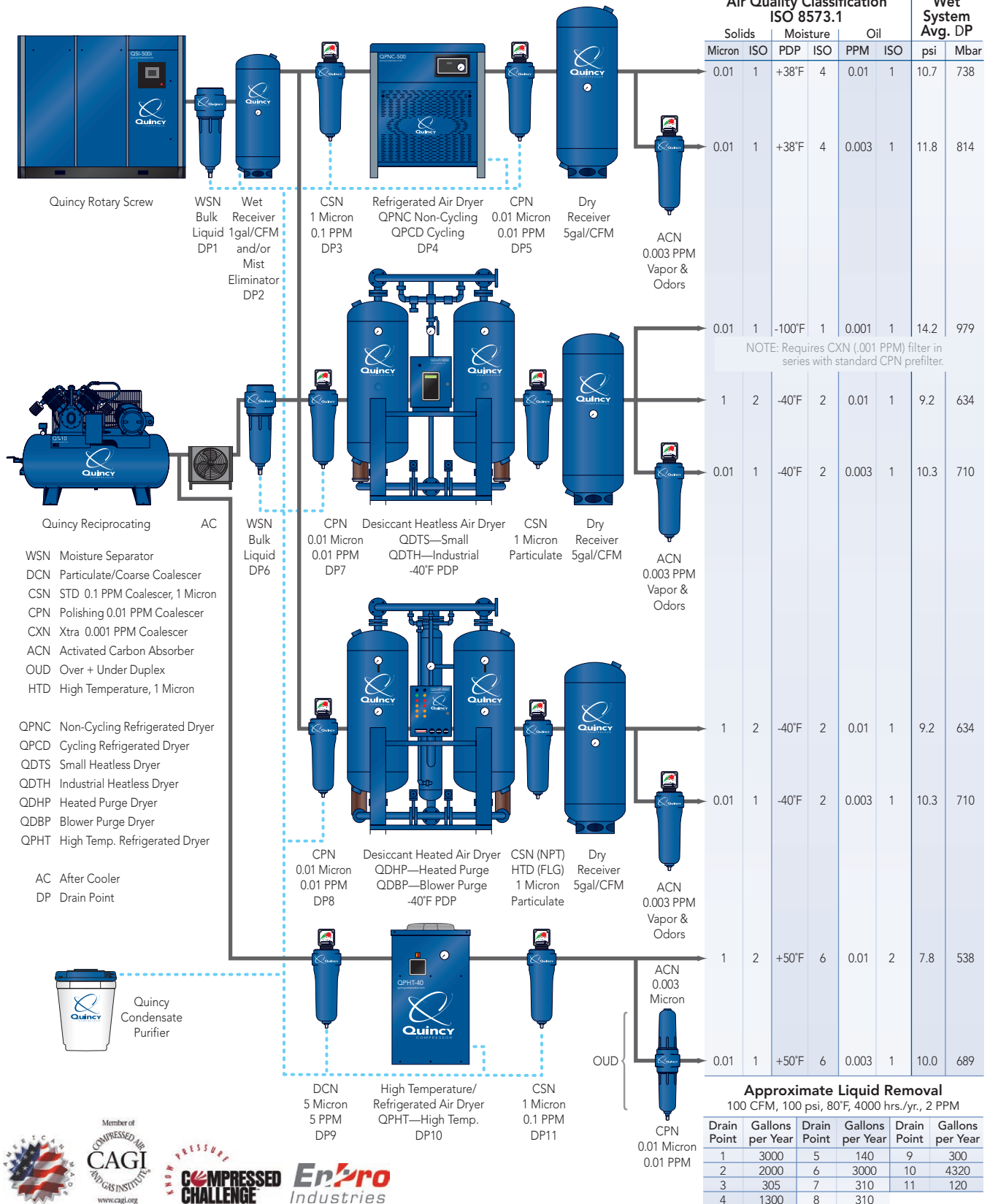
Quincy Compressor proudly publishes total package acfm which is measured and reported in accordance with industry standard CAGI/PNEUROP PN2CPTC2

guidelines. Every Quincy QSI meets or exceeds CAGI/PNEUROP PN2CPTC2 guidelines - ensuring that you get every acfm that has been promised.

COMPRESSED AIR SYSTEMS BEST PRACTICE



The Science of Compressed Air



Air Quality Classification ISO 8573.1						Wet System Avg. DP	
Solids		Moisture		Oil		psi	Mbar
Micron	ISO	PDP	ISO	PPM	ISO		
0.01	1	+38°F	4	0.01	1	10.7	738
0.01	1	+38°F	4	0.003	1	11.8	814

NOTE: Requires CXN (.001 PPM) filter in series with standard CPN prefilter.

0.01	1	-100°F	1	0.001	1	14.2	979
1	2	-40°F	2	0.01	1	9.2	634
0.01	1	-40°F	2	0.003	1	10.3	710

1	2	-40°F	2	0.01	1	9.2	634
0.01	1	-40°F	2	0.003	1	10.3	710

1	2	+50°F	6	0.01	2	7.8	538
0.01	1	+50°F	6	0.003	1	10.0	689

1	2	-40°F	2	0.01	1	9.2	634
0.01	1	-40°F	2	0.003	1	10.3	710

1	2	+50°F	6	0.01	2	7.8	538
0.01	1	+50°F	6	0.003	1	10.0	689

Approximate Liquid Removal 100 CFM, 100 psi, 80°F, 4000 hrs./yr., 2 PPM					
Drain Point	Gallons per Year	Drain Point	Gallons per Year	Drain Point	Gallons per Year
1	3000	5	140	9	300
2	2000	6	3000	10	4320
3	305	7	310	11	120
4	1300	8	310		

- WSN Moisture Separator
- DCN Particulate/Coarse Coalescer
- CSN STD 0.1 PPM Coalescer, 1 Micron
- CPN Polishing 0.01 PPM Coalescer
- CXN Xtra 0.001 PPM Coalescer
- ACN Activated Carbon Absorber
- OD Over + Under Duplex
- HTD High Temperature, 1 Micron
- QPNC Non-Cycling Refrigerated Dryer
- QPCD Cycling Refrigerated Dryer
- QDTS Small Heatless Dryer
- QDTH Industrial Heatless Dryer
- QDHP Heated Purge Dryer
- QDBP Blower Purge Dryer
- QPHT High Temp. Refrigerated Dryer
- AC After Cooler
- DP Drain Point



©2009 Quincy Compressor an EnPro Industries company
All rights reserved. Litho in U.S.A. (QSI-004 01/09)