

Desoutter



Industrial TOOLS



NANO DRIVER Electric Transducerized Screwdriver

*Extreme precision
Easy integration into automation
Integrated vacuum
On-screen programmable
Joint learning capability*

More Than Productivity



Nano Driver System

Designed for Production Optimization with Laboratory Accuracy

>> TOOL FEATURES

Transducerized tool for Extreme Precision

- 4mm wing shank and half moon bits for the smallest screws
- Safety Critical Repeatability
- Traceability using internal transducer

Ergonomic Design

- Streamlined & contoured
- Non-slip Tool Housing
- Push / Lever start
- Highly Flexible Light Weight Industrial Cable
- M20 output thread for easy integration and automatization

Programmable Vacuum System Activation Options

- Built in Accelerometer
- Dedicated connector for 24V vacuum pump



>> VACUUM SOLUTION FOR PICK UP SCREWS



Integrated vacuum channel inside the tool

- Pump management done directly by the CVIXS controller
- Vacuum start-up with trigger, I/Os, accelerometer or programmable on fastening phases
- Easy to use manually or with robots



>> CONTROLLER FEATURES

Network Integration

- Field Bus Module Kit (optional)
- Open Protocol/Desouter Protocol
- Programmability on the Fly

User Set-Up Options

- Joint Learning Capable
- Quick Set-up via Key Pad
- CVI PC 2000
- Seating detection strategy

Mounting Options

- DIN Rail, Wall or Table Top

Flexibility

- 50 different Psets and 15 steps



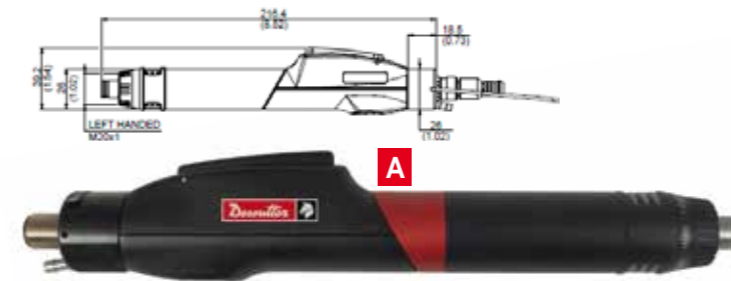
Nano Driver System

Designed for Production Optimization with Laboratory Accuracy

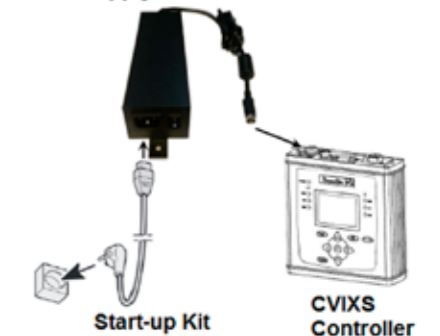
PICTURE	MODEL	PART NUMBER	OUTPUT DRIVE	TORQUE RANGE				MAX SPEED	LENGTH		WEIGHT	
				MIN. Ncm	MAX. Ncm	MIN. in/lb	MAX. in/lb		mm	in.	kg	lb
A	ERXS20	615 165 874 0	WS - HM	6	20	0.53	1,77	1000	216	8,5	0,3	0,66
A	ERXS50	615 165 875 0	WS - HM	15	50	1.32	4,43	1000	216	8,5	0,3	0,66
A	ERXS80	615 165 876 0	WS - HM	24	80	2.12	7,08	1000	216	8,5	0,3	0,66

DESCRIPTION	PART NO.
TOOL & EXTENSION CABLE 3 METERS - 9.8FT*	615 917 643 0

*Connect up to 3 cables (Max 9 Meters - 29.5ft)



Power Supply



ACCESSORIES

ITEM		PART NUMBER
vacuum solution		
1	Vacuum pump	615 399 087 0
2	Cable CVIXS - Vacuum pump	615 917 644 0
3	Vacuum pump accessories kit	615 399 119 0
4	"Blank nozzle short: 40mm. To be machined according to screw"	615 704 033 0
5	"Blank nozzle long: 60mm. To be machined according to screw"	615 704 034 0
6	"Vacuum adapter kit. For tool handheld. To be ordered with a blank nozzle"	615 812 883 0
Arms		
7	D53-5	615 810 700 0
8	D53-5S	615 810 706 0
9	Special clamp	615 812 885 0
Bits		
10	Refer to accessories catalogue	-
miscellaneous		
11	Flange M20 for automatization	2050528753
12	DTH42 Tool holster	107892



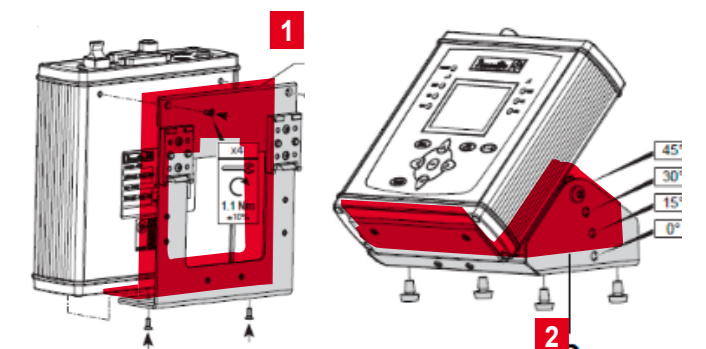
MODEL	PART NUMBER	TOOLS	CONSUMPTION	SUPPLY VOLTAGE	DIMENSIONS			WEIGHT				
					WIDTH	HEIGHT	DEPTH	kg	lb.			
CVIXS CONTROLLER	615 932 720 0	ERXS	150	36VDC	171,6	6,73	171	6,75	54,6	2,15	1,12	2,2
CVIXS POWER SUPPLY	615 932 663 0	CVIXS	72-180	100-240 VAC	65	2,56	50	8,07	50	1,97	0,97	2,13

START-UP KIT

PLUG	DESCRIPTION	PART NO.
A	European	615 917 201 0
B	US*	615 917 203 0
C	UK	615 917 202 0
D	Chinese	615 917 206 0

* Included with the power supply

ITEM	DESCRIPTION	PART NO.
1	KIT RAIL DIN SUPPORT CVIXS	615 812 231 0
2	KIT ANGLE SUPPORT CVIXS	615 812 232 0



More Than Productivity



www.desouttertools.com

English
© Copyright 2015
Mai 2016 - Issue 2